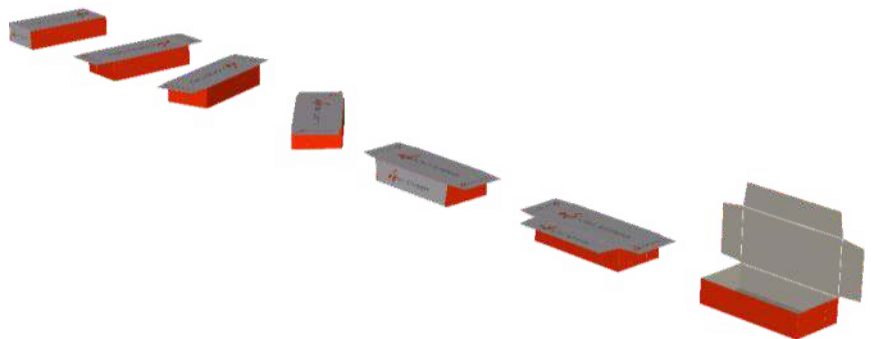


CARTON CLOSING MACHINE S600



- SPEED UP TO 70 CARTONS PER MINUTE
- VERY ACCURATE CARTON CLOSING
- EASY AND QUICK SIZE CHANGEOVERS
- EASY TO CLEAN



Food Automation
ENGINEERED FOR EXCELLENCE IN MACHINERY

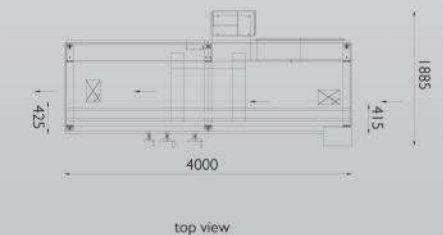
SCHUT SYSTEMS bv

Loubergweg 22
NL 6961 EK Eerbeek

T +31 (0)313 674 500
F +31 (0)313 674 550
E info@schutsystems.com

Food Automation Pty Ltd
PO Box 3242 Newton
South Australia 5074
T: +61 427 565 658
E: chris@foodautomation.com.au
W: www.foodautomation.com.au

schutsystems.com



CARTON CLOSING MACHINE S600

The S600 3-flap carton closing machine is a continuously operating machine with a speed up to 70 cartons per minute. The machine is equipped with a lid corrector by which the carton is very accurate rectangular closed.

Notable is the accessibility of the machine (see photo above). Also special carton constructions, like for example conic shaped cartons, can be closed by the S600.

Photo above
The machine is easy accessible and maintenance friendly.

Photo left (above)
Hand wheels with digital read outs and adjustable stops reduce change over time.

TECHNICAL CHARACTERISTICS

Speed	Up to 70 cartons p/min., (Question to carton size and carton construction)
Supply voltage	400V, 3 phase, Pe and neutral
Control voltage	24V DC
Power demand	6,1 kW
Directive	Low Voltage (LVD) (2014/35/EC) EMC Directive (2014/30/EC) Machinery Directive (MD) (2006/42/EC)
Air pressure	6 bar dry and filtered
Air consumption	50 NI/min at 6 bar
Machine size	4000 x 1885 x ca 1500 mm
Weight	1100 kg
	Product coding unit Automatic Nordson glue loading system

Other options on request