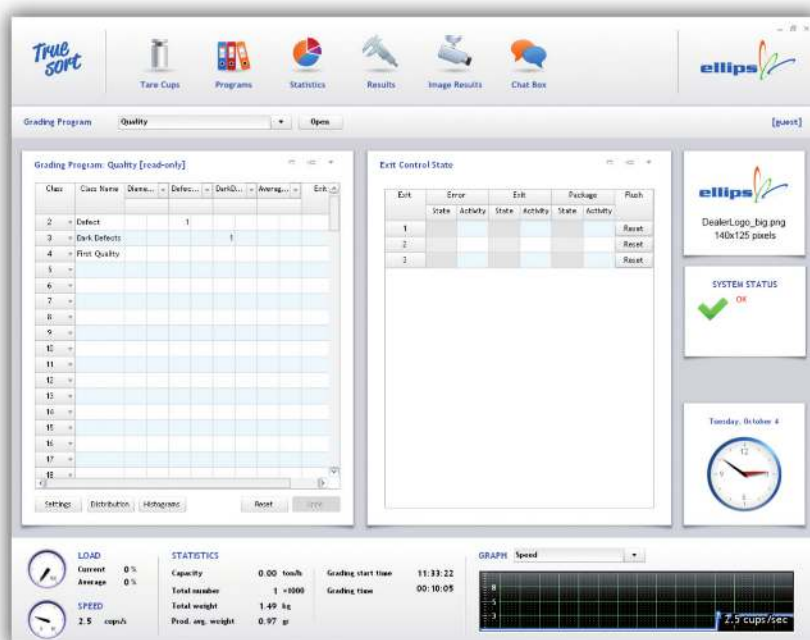




# True Sort

## Highlights

- Low cost / high performance.
- Capable of grading on up to 24 lanes simultaneously.
- Speeds up to 35 cups/second.
- Grade on: weight, length, diameter, curvature, color, quality, reflection, open flower and more.
- In-house developed hardware for optimal system performance and operability.
- User-friendly interface that allows easy modification of the grading process.
- Direct feedback of measurements for easy adjustment of grading parameters



## Grading Technology

- easily define grading classes.
- grade on multiple properties.
- switch between grading programs with ease.
- create new programs.
- create new sorting criteria.
- view live statistics of the graded products and packages.
- review measurements in real time, per lane or per feature.

### Size

The dimensions of each product are calculated using measurements taken from multiple images of the product.

### Weight

Using digital filters, noise on the weight sensors is effectively eliminated, resulting in accurate weight measurements.

### Color

The color of the fruit is highly representative for the quality and ripeness.

### Quality

For some properties of the fruit the color module is not enough.

Shape and context are also important to determine and distinguish specific properties, such as navel, stalk and defects.

### Easy


Measurements and images of the products can be viewed in realtime, allowing direct control through modification of the grading process.



## Highlights

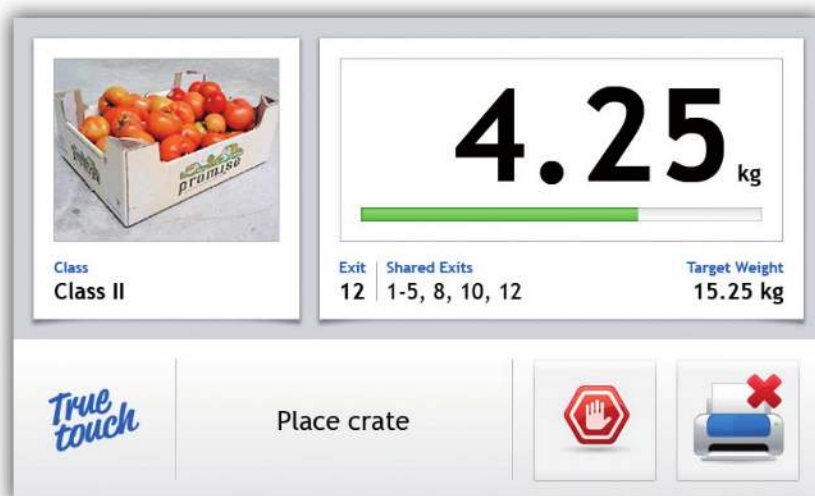
- High performance and flexible scale, to be used with the *Ellips TrueSort* system.
- Control all scales / exit units from 1 central operator position.
- Speeds of up to more boxes or packages per second a single person can handle.
- Pack on: weight, length, diameter, curvature, color, quality and more.
- In-house developed hardware for optimal system performance and operability.
- User-friendly **Touch Screen** interface that allows easy modification of the packing process.
- Direct overview of measurements in a central computer.

## Specifications

24 Volts DC.  
 4 signal inputs.   
 4 signal outputs.  
 Ethernet.  
 Loadcell input.  
 Serial/USB for printer.  
 Firmware upgradeable.

## Easy

Packaging information is updated real-time, allowing direct control and modification of the packing process.



## Smart Exit Controlling Technology:

- Outperforms all similar form factor scales.
- Switch between packing programs with ease.
- Create programs with different filling algorithms.
- Create different labels for different packages.
- View measurements and classes in real time.
- Adjustable logos and pictures.